

PAG. 20 CHILD'S MINI PULLOVER



YARNS ADRIAFIL YARNS

MATERIALS

Total 200 g. Rowto **Avantgarde** yarn of which: 100 g. cream no. 11, 50 g. colour blue no. 22 and 50 g. red no. 17. 50 g. Rowto Merinos yarn green no. 39. Knitting needles no. 3 and no. 31/2. 3 buttons. Tapestry needle with rounded tip.

AGE: 12-18 months

when the work measures 10,5 cm. from beg. of the raglan, equal to 34 rows, to shape the neckline bind off the 22 centre stitches and cont. working each part separately, bind off. again towards the centre, every 2 rows, 3 sts., 2 sts., 1 st.
Right sleeve: Cast on 35 sts. with knitting needles no. 3 and the cream yarn and work 4 rows in elastic rib and 18 rows in rib st. 1/1, equal to 5 cm. Cont. with knitting needles no. 31/2 in knitted stitch, increasing 11 st. in row 1. At the sides increase 1 st. alternating every 4 and every 6 rows for a total of 9 times. When the work measures 16,5 cm. from the edge, equal to 52 rows, to shape the raglan, bind off the sts. and work the dec., on the left of the work, as described for the back, on the right of the work, as described for the Front. At the end of the right raglan (= Front), to shape the shoulder bind off rightwise, every 2 rows, 7 sts., 4 sts., 3 sts. twice
Left sleeve: Work to match the right sleeve, symmetrically.

MAKING UP AND FINISH

Sew the raglan on the three sides leaving the left front raglan open. With knitting needles no. 3 and the cream yarn knit up 93 sts. around the neckline and work 4 rows in rib st. 1/1 and 4 rows in elastic rib. Graft stitches with the tapestry needle. In the same way knit up 37 sts. along the left front raglan and work a border as before, working, in row 3 in rib st. 1/1, 3 eyelets of 2 sts. distributed evenly. Work in the same way the trim along free raglan of the sleeve knitting up 41 st. without working in the eyelets. Sew the sides and the sleeve seams. Sew the buttons on the edge of the sleeve opposite the eyelets.

PATTERN STITCHES

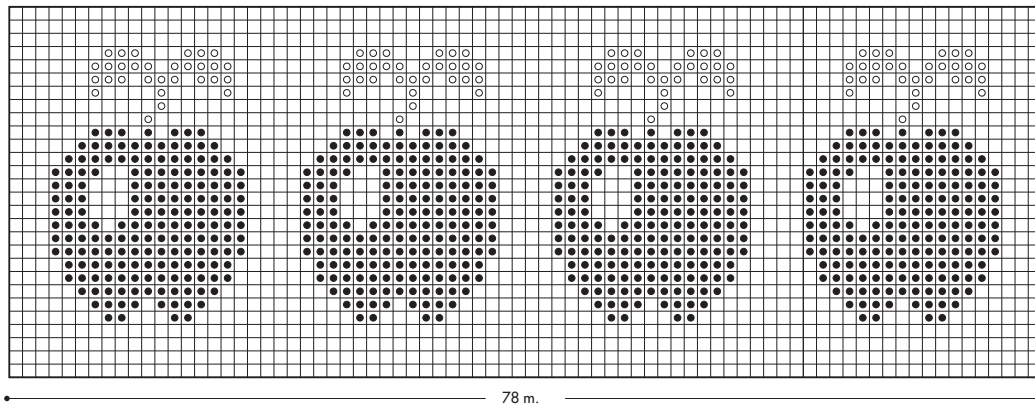
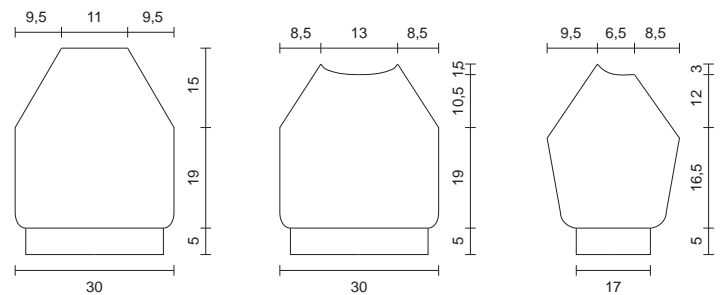
Elastic rib
Rib stitch 1/1
Knitted stitch
Intarsia and Fair Isle patterns: follow the chart

SAMPLE

Work a 10 x 10 cm square with knitting needles no. 31/2 in knitted stitch with fair isle and intarsia pattern = 26 sts. and 31 rows.

WORKING INSTRUCTIONS

Back: Cast on 75 sts. with knitting needles no. 3 and the cream yarn and work 4 rows in elastic rib and 18 rows in rib st. 1/1, equal to 5 cm. Cont. with knitting needles no. 31/2 in knitted stitch increasing 3 sts. in row 1. When the work measures 6 cm. from the edge, equal to 18 rows, work 4 rows with the blue yarn, then, cont. in knitted stitch with Fair Isle and Intarsia pattern following the chart; at the end, cont. in knitted stitch working 4 rows with the blue yarn, then, finish with the cream yarn. When the work measures 19 cm from the edge, equal to 58 rows to shape the raglans, bind off at each side 2 sts., then, dec., inside the first and last 2 sts., 1 st. every 2 rows 23 times. When the work measures 15 cm. from beg. of the raglans, equal to 48 rows, bind off the rem. 28 sts. for the neck.
Front: Work to match Back until the work measures 19 cm. from the edge, equal to 58 rows, to shape the raglan bind off at each side 2 sts., then, dec., inside the first and last 2 sts., 1 st. every 2 rows 20 times. At the same time,



PAG. 20 CHILDREN'S SOCKS



YARNS ADRIAFIL YARNS

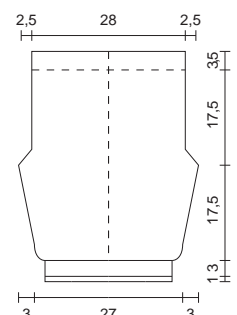
MATERIALS

100 g. Rowto **Avantgarde** yarn cream no. 11 and several g- in blue no. 22 and red no. 17. Several g. Rowto Merinos green no. 39. Knitting needles no. 3 and no. 31/2. 50 cm elastic band, height 2,5 cm. Tapestry needle with rounded tip.

AGE: 12-18 months

Left: with knitting needles no. 3 and the blue yarn cast on 69 sts. and work 6 rows in elastic rib, equal to 1 cm; cont. with the cream yarn and work 12 rows in rib st. 1/1, equal to 3 cm. Cont. with knitting needles no. 31/2 and the cream yarn in knitted stitch increasing at the sides 1 st. every 12 rows, twice, 1 st. after rows, 1 st. after 6 rows, 1 st. every 4 rows, twice, 1 st. every 2 rows, twice. At the same time, when the work measures 6 cm. from the edge, equal to 18 rows, work in the apple pattern following the chart provided for the pull, only for the part between the broken line, positioning the pattern inside the last 14 sts. (= inside the leg); at the end of the chart, cont. over all the stitches in knitted stitch with the cream yarn. When the work measures 17,5 cm. from the edge, equal to 54 rows, for the crutch, dec. at the sides 1 st. every row 6 times. Cont. until the work measures 17,5 cm. from beg. of the crutch, equal to 54 rows; to mark in the waist band, work 1 row in knitted stitch on the back of the work then, finish off in knitted stitch. When the work measures 3,5 cm. from the waist band, equal to 10 rows, bind off together the rem. 73 sts.
Right: Work to match the left, without working in the apple pattern.

MAKING UP AND FINISH
Sew the inside of the legs and the crutch and cont. the seam at the centre Front and Back up to the waist band. Reverse the waist band, on the purled row and fix with invisible stitches leaving a small opening for the elastic band. Fit the elastic band and sew the ends. Sew the waist band.



PATTERN STITCHES

Elastic rib
Rib stitch 1/1
Knitted stitch
Fair Isle and intarsia pattern: following the chart above

SAMPLE

Work a 10 x 10 cm square with knitting needles no. 31/2 in knitted stitch with Fair Isle and Intarsia pattern = 26 sts. e 31 rows.

WORKING INSTRUCTIONS

Work the shorts in two parts, right and left, each making up the Back and the Front.

PAG. 20 | APPLE COVER



YARNS ADRIAFIL YARNS

MATERIALS

Total 350 g. Rowto **Merino** yarn of which: 200 g. cream no. 44, 50 g. blue no. 22, 50 g. red no. 17 and 50 g. green no. 39. Knitting needles no. 3 1/2. Crochet hook no. 4.

SIZE: 68x69

cm., equal to 203 rows, work over all the stitches in garter st. for 2 rows, then, bind off together all the stitches

MAKING UP AND FINISH

Finish the borders of the blanket with crochet hook no. 4 and the cream yarn working 1 row in reverse sc.

PATTERN STITCHES

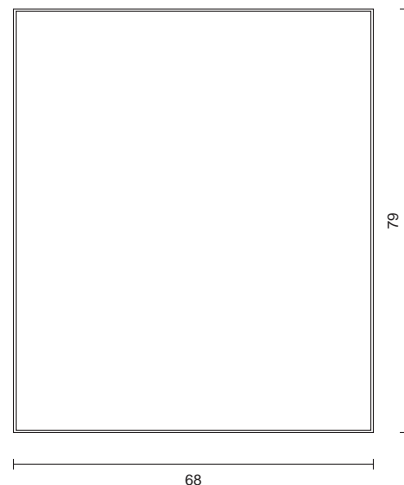
Knitted stitch
Garter stitch
Fair Isle and intarsia pattern: following the chart.
Reverse single crochet: work like sc. from left to right.

SAMPLE

Work a 10 x 10 cm square with knitting needles no. 3 1/2 in knitted stitch with Fair Isle and Intarsia pattern = 21 st. and 26 rows

WORKING INSTRUCTIONS

Cast on 144 sts. with knitting needles no. 3 1/2 and with the cream yarn work 2 rows in garter st. Cont. work as follows: 2 garter sts.; k/28 alternating 4 rows of the cream yarn and 4 rows of the blue yarn; 84 sts. in Fair Isle and Intarsia pattern; 28 sts. in knitted stitch, alternating 4 rows of the cream yarn and 4 rows of the blue yarn; 2 sts. in garter st. For the Fair Isle and Intarsia pattern follow the chart of the jumper from row 5 to row 25 working an extra 3 sts in knitted st. with the cream yarn on each side of the pattern; at the end of the pattern, cont. on these 84 sts. in knitted stitch with the cream yarn for 35 rows, then, repeat the work from row 5 of the chart; work 4 rows of patterns and, at the end of the row 4, work 6 rows in knitted stitch with the cream yarn. When the work measures 78



PAG. 21 | TOY SACK



YARNS ADRIAFIL YARNS

MATERIALS

Total of 550 g. yarn 100% fine "Lana Lavatrice" of which: 250 g. colour dark green no. 77, 150 g. colour blue no. 49, 50 g. colour red no. 17; several g. of the cream yarn no. 11. Knitting needles no. 3 1/2. Crochet hook no. 3.00. 80 x 90 cm. material for the lining colour dark green. Tapestry needle with rounded tip.

SIZES: 30 cm. base and 77 cm. height

Shoulder belt: cast on 10 sts. with knitting needles no. 3 1/2 and the blue and work in knitted stitch. for 120 cm. Bind off stitches

MAKING UP AND FINISH

With the needle and the cream yarn work 9 vertical lines in running stitch on the rectangular band: space at 19 sts from each other (between petals) knitting up and skipping 2 rows of knitted stitch for each running stitch. Fold the shoulder belt in half lengthwise, right side against right side, and sew; turn over to right side and insert into the eyelets leaving outward facing ends free. Sew the side edges of the rectangular band; Sew the bottom edge to the base, evening the two sizes and fitting the end of the shoulder belt into the seam. Preparing the lining: sew the bottom edge and the side edges. Fit the lining inside the haversack, pinning the top edge to the corresponding edge of the haversack, on the reverse side, fold inwards for 3,5 cm. and sew it on the reverse, picking up the lining at the same time and fitting the shoulder belt gradually.

PATTERN STITCHES

Knitted stitch
Chain stitch
Single crochet (sc)
Running stitch

SAMPLES

Work a 10 x 10 cm square with knitting needles no. 3 1/2 in knitted stitch. = 23 sts. and 29 rows.
10 cm. with Crochet hook no. 3.00 in sc. worked in a circle = 28 rows.

WORKING INSTRUCTIONS

The haversack consists of 4 parts: a round base, a rectangular band, 10 petals and a shoulder belt.

Round base: with Crochet hook no. 3.00 and the dark green work a chain of 6 sts., with a loop with 1 loop st. and, in the circle work 12 sc. in row 1; 24 sc. in row 2; 36 sc. in row 3. Cont. in sc. without closing the rows and increase 1 st. every 3 sts. in the next row, 1 st. every 4 sts. in the next row and so on ensuring that the circle worked is flat. When the work is 30 cm, stand the work.

Rectangular band: Cast on 190 sts. with knitting needles no. 3 1/2 and the dark green and work in knitted stitch. per 45 cm, equal to 132 rows. Cont. with the blue for 28 cm., equal to 80 rows., then, work 2 eyelets of 1 st. and 2 rows inside the first and last 6 sts. When the work measures 35 from beg. of the work in blue, equal to 100 rows bind off together all the stitches

Petals: with Crochet hook no. 3.00 and the red knit up the first 19 sts. of the rectangular band, at the colour change, and work in sc. 22 rows decreasing at the sides 1 st. every 4 rows twice, 1 st. after 3 rows, 1 st. every 2 rows 5 times. Stand the work on the rem. 3 sts.. Work 10 petals.

