

BLANKET "MINNIE"

YARNS AVANTGARDE E PEPLO



E 100% PURA LANA FINE

AdriaFil Yarns

YARN REQUIRED

400 g **Avantgarde**: 300 g White no. 02 and 100 g Print No. 63. Several g of the following yarns to embroider the motif: **Peplo** Yellow No. 05, Salmon Pink No. 19 and Pink No. 03; Lana Fine for Washers Seagreen No. 08; **Avantgarde** Blue No. 09. Crochet Hook No. 3.50. Needles No. 41/2. Tapestry Needle.

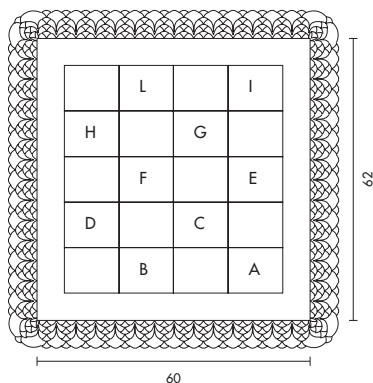
SIZE: cm. 60x62

PATTERN STITCHES

Stock stitch
 Checkerboard stitch: over 4 sts.
 Row 1 * k2, p2, *. Rep. from * to *
 Row 2 and all even rows: work stitches as they are
 Row 3: * p2, k2, *. Rep. from * to *
 Row 5: repeat from row 1.
 Chain stitch
 Single crochet
 Double crochet
 Treble crochet
 Cross stitch and double running stitch for the embroidered motif: follow chart.

GAUGE

10 x 10 cm. With needles no. 41/2 work in stock stitch = 15 sts. and 21 rows.



WORKING INSTRUCTIONS

With needles no. 41/2 cast on 96 sts and work in checkerboard st for 4,5 cm.. Cont. establishing work as follows: 8 sts in checkerboard st, (20 sts in stock stitch, 20 sts in checkerboard st) 2 times, 8 sts. in checkerboard st; after 11 cm. establish the stitches as follows: 8 sts in checkerboard st, (20 sts in checkerboard st, 20 sts in stock stitch) 2 times, 8 sts in checkerboard st and work for another 11 cm.. Cont. alternating layout of work every 11 cm. to make 5 rows of square motifs. Cont. over all the stitches in checkerboard st for 4,5 cm., then bind off the sts.

FINISHING

Embroider the motifs in cross st and double running st following the chart. Remember that each cross stitch covers 1 st. and 1 row of the stock stitch work; arrange the motifs and colours as shown in the main chart.

With crochet hook no. 3.50 trim the edges of the blanket, beginning at a corner as follows:

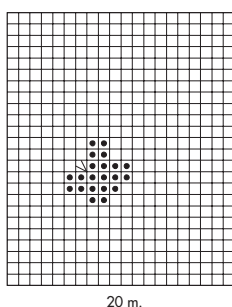
Row 1: * 5 tr. (= replace the 1st tr. of each row with 3 ch.), skip 2 sts, 1 dc. in next st. skip 2 sts *, rep. from * to *; end this row and the succ. rows with 1 sc. in the starting stitch.

Row 2: 2 sc. in the first 2 tr. * 5 tr. in the centre tr. of the 5 tr. cluster, 2 ch., 1 dc. in the next dc. 2 ch., *, Rep. from * to *

Row 3: 2 sc. in the first 2 tr. * 5 tr. in the centre tr. of the 5 tr. cluster, 3 ch., 1 dc. in the next dc. 3 ch., *, Rep. from * to *

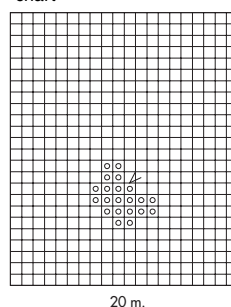
Row 4: 2 sc. in the first 2 tr. * 5 tr. in the centre tr. of the 5 tr. cluster, 6 ch., skip the next two 3 ch. loops *, Rep. from * to *
 Break off and bind the yarn

chart A



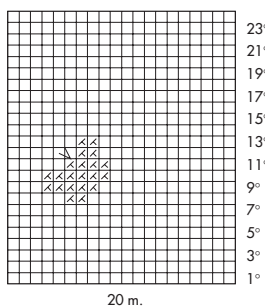
• = 1 cross stitch in green
 - = running stitch in green
 □ = knitted stitch in cream

chart B



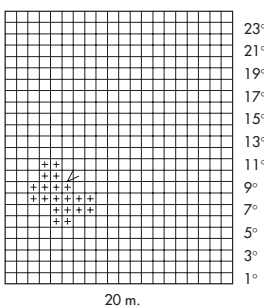
○ = 1 cross stitch in pink
 - = running stitch in pink
 □ = knitted stitch in cream

chart C



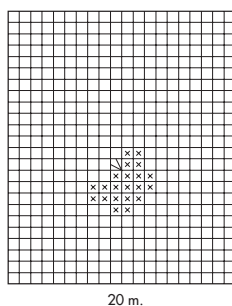
x = 1 cross stitch in yellow
 - = running stitch in yellow
 □ = knitted stitch in cream

chart D



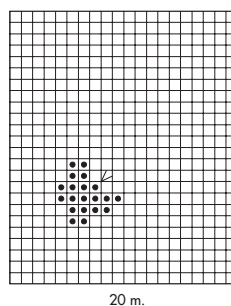
+ = 1 cross stitch in blue
 - = running stitch in blue
 □ = knitted stitch in cream

chart E



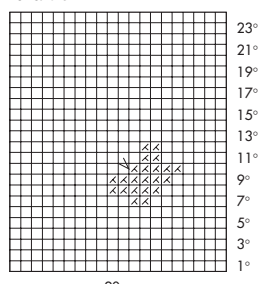
x = 1 cross stitch in apricot
 - = running stitch in apricot
 □ = knitted stitch in cream

chart F



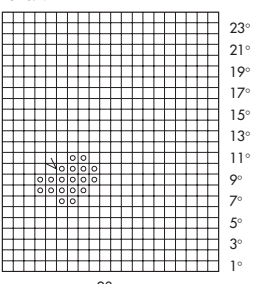
• = 1 cross stitch in green
 - = running stitch in green
 □ = knitted stitch in cream

chart G



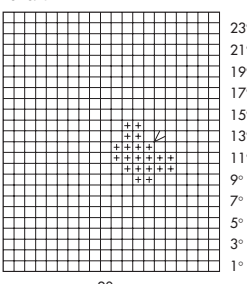
x = 1 cross stitch in yellow
 - = running stitch in yellow
 □ = knitted stitch in cream

chart H



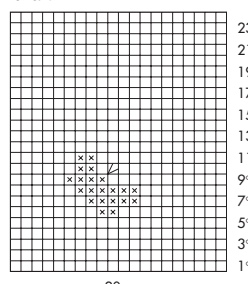
○ = 1 cross stitch in pink
 - = running stitch in pink
 □ = knitted stitch in cream

chart I



+ = 1 cross stitch in blue
 - = running stitch in blue
 □ = knitted stitch in cream

chart L



x = 1 cross stitch in apricot
 - = running stitch in apricot
 □ = knitted stitch in cream