

SET "MARIT"

YARN AVANTGARDE



YARN
Adriafile yarns

MATERIAL REQUIRED

Yarn Amounts: 150 g **Avantgarde** colour No. 11;
50 g **Avantgarde** colour No. 71
Needles: 2,5 mm e 3 mm

SIZE: 3 (4) years

FINISHED MEASUREMENTS

Chest: 66 (72) cm
Length: 34 (35) cm

GAUGE

10 x 10 cm. with needles no 3 work in stockinette stitch = 28 sts and 36 rows.

WORKING INSTRUCTIONS

Note: First and last stitches on needle are edge stitches and are not included in the diagram! Motif can be knit in or embroidered on later.

Back: With 2,5 mm cast on 88 (98) sts on and work 3 cm in garter stitch. Next row: Change to 3 mm needles and stockinette st and inc 8 sts evenly across row. Purl next row. Begin diagram. When piece measures 21,5 (22,5) cm, bind off 7 sts at beg of next 2 rows for armhole. Thereafter dec 1 st at beg of next 12 rows. When piece measures 33,5 (34,5) cm, bind off 10 sts from beg of next row. Work 10 (12) sts, join new yarn and bind off 36 (38) sts for back neck. Finish row. Bind off 5 (6) sts at beg of next row and work back to neck. Bind off 1 st at neck edge. Bind off 4 (5) sts at shoulder edge. Finish row. Bind off all sts over next row. Work other side of neck the

same but reverse the shaping.

Front: Cast on and work same as for back. When piece measures 28 cm, bind off the middle 22 (24) sts and work each side of neck separately. Bind off 1 st at neck edge every other row, 8 times. Continue to work evenly until piece measures 33,5 (34,5) cm and then work shoulder shaping as for back.

Sleeves: With 2,5 mm needles cast on 42 sts and work 3 cm in garter stitch.

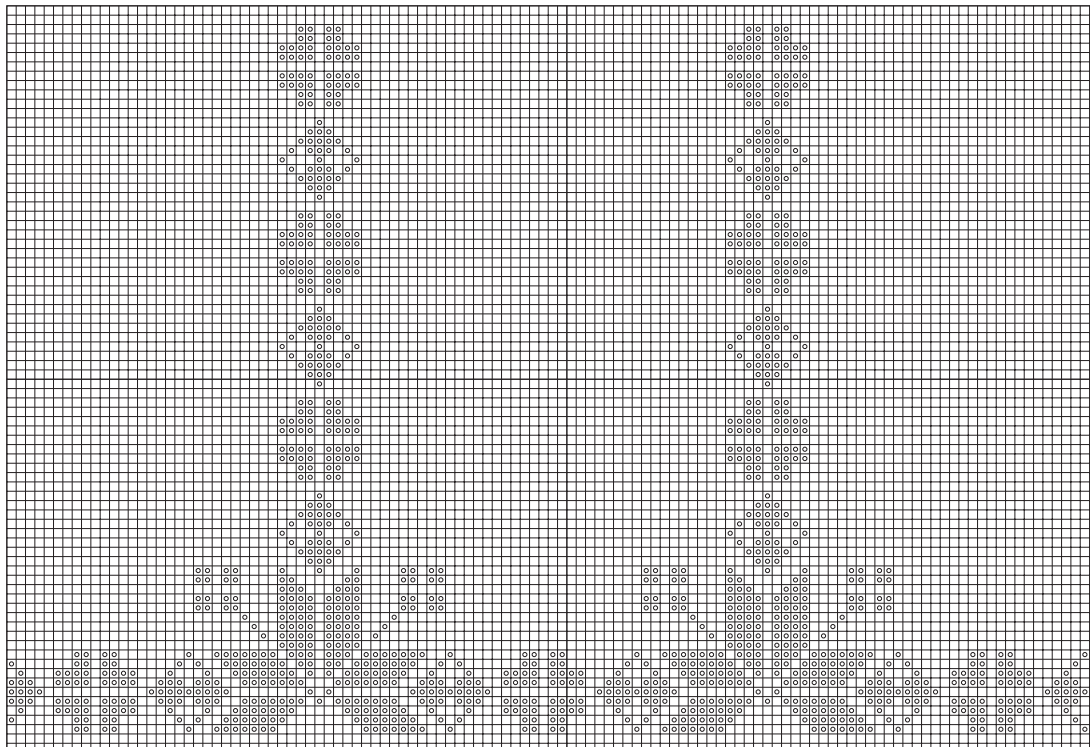
Change to 3 mm needles and stockinette st and inc 4 sts evenly across row. Purl next row. Begin diagram for sleeve (center one vertical pattern at middle of sleeve). Inc 1 st at each side every 2 rows 2 (4) times, then every 4 rows 8 (9) times. When piece measures 25,5 (26) cm, bind off 7 sts at beg of next 2 rows for armhole. Thereafter bind off 2 sts at beg of next 12 rows, then 1 st at beg of next 8 rows (both sizes). Bind off all sts over next row.

FINISHING

Finishing and neck edge: Join left shoulder seam.

Neck: Pick up 90 (94) sts evenly at neck edge and work in garter st for 3 cm. Join right shoulder seam and neck edge. Fit sleeve into armhole and join. Join side and sleeve seams.

Hat: With 2,5 mm needles, cast on 119 sts and work 3 cm in garter stitch. Change to 3 mm needles and stockinette st and work 2 rows. Work according to hat diagram for 15 cm. Begin top shaping by knitting tog the 7th and 8th sts across row. Work decs every other row with one less st between the decs each time until 8 sts are remaining. Pull yarn through these sts to fasten. Join back seam.



o = blue

SET "OLGA"

YARN AVANTGARDE



YARN
Adriafil yarns

MATERIAL REQUIRED

Yarn Amounts: 150 g **Avantgarde** colour No. 05; 50 g each of **Avantgarde** colours No. 02, 17, 82 Needles: 2,5 e 3 mm

SIZE: 2 (3) years

FINISHED MEASUREMENTS

Chest: 67 (71) cm
Length: 30,5 (32,5) cm
Accessories: 6 buttons

PATTERN STITCHES

Checkerboard stitch pattern:

Rows 1, 3, 5, 6, 8, 10: k1, *k5, p5*, repeat between * *, k1.

Rows 2, 4, 7, 9: p1, *p5, k5*, repeat between * *, p1.

Repeat these rows throughout.

GAUGE

10 x 10 cm. with needles no 3 work in stockinette stitch = 28 sts and 36 rows.

WORKING INSTRUCTIONS

Note: Horse motif can be knit in or embroidered on later.

Back: With needle 2,5 mm cast on 94 (102) sts on and knit 5 cm in k2 / p2 rib. Next row: Change to needle 3 mm. Fold up the rib and knit up the lower edge as follows: place the back loop of same st from first rib row onto left needle and knit tog with next st. Follow the diagram. After diagram is completed continue in checkerboard stitch pattern as described above. When piece measures 19 (20) cm, bind off 6 sts at beg of next 2 rows for armholes. Thereafter bind off 1 st at beg of next 12 rows. When piece measures 30 (31) cm, bind off 5 sts at beg of row, work 11 sts and then bind off the next 30 sts for back neck. Finish row. Work both sides of neck separately. Bind off 5 sts at beg of next row for shoulder shaping and work across. Bind off 1 st from neck edge and finish row. Bind off all sts over next row.

Right Front: With needle 2,5 mm cast on 46 (50) sts and knit rib as for back. (Work horse on left side of diagram). When piece measures 19 (20) cm bind off for armhole at beg of next ws row. When

piece measures 23,5 (25,5) cm, bind off 8 sts for neck opening at beg of next rs row. Bind off 1 st from neck edge every other row, 7 times. When piece measures 30 (32) cm, bind off for shoulders as for back.

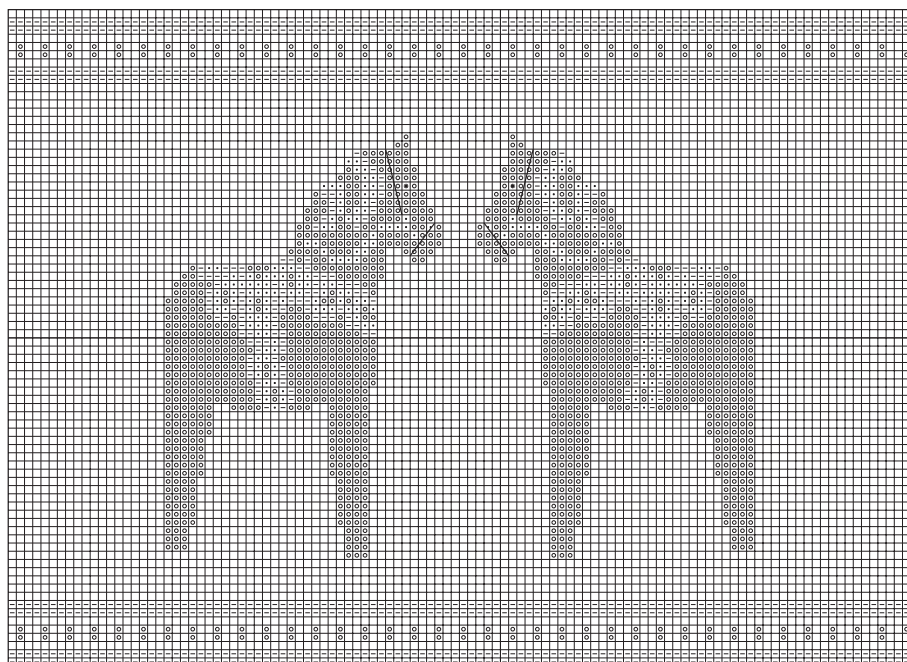
Left Front: With needle 2,5 mm cast on 46 (50) sts and work rib as for back. (Work horse at right side of diagram). Work as for right front reversing the shaping.

Sleeves: With needles 2,5 mm cast on 42 (46) sts and work rib as for back. Change to larger needles and checkerboard pattern. Inc 1 st at each side every other row 2 times, then every 4 rows 6 times. When piece measures 19 (19,5) cm, bind off 6 sts at each side for sleeve cap. Thereafter bind off 2 sts at beg of next 12 rows, then 1 st at beg of next 6 rows (both sizes). Bind off all sts.

FINISHING

Finishing and neck edge: Join shoulder seams. **Neck:** With smaller needles pick up 28 sts along the right front neck edge, 38 sts along the back neck and 28 sts along the left front neck edge (= 94 sts). Work in k2 / p2 rib for 36 rows. Bind off all sts loosely. Left front: With rs facing pick up 70 (74) sts along left front edge with needle 2,5 mm and work in k2 / p2 rib for 36 rows. Bind off loosely. Fold over and sew edge in place. Place markers along left front edge for buttonholes 1 cm down from top edge and 1 cm up from bottom edge. Place 4 more markers evenly spaced between these. Right front: Pick up sts and knit as for left front for 8 rows. Work buttonholes corresponding to the placement of the markers of left front. Buttonholes: Bind off 2 sts, cast on 2 sts at same place on next row. Work in k2 / p2 rib for 18 more rows. Work buttonholes again in same position. Work for a total of 36 rows and then bind off loosely. Fold over and sew edge in place on back side of work. Sew edges of buttonholes together. Join shoulder and side seams. Fit sleeve into armhole and join. Sew on buttons.

Hat: With needles 2,5 mm, cast on 114 sts and work in k2 / p2 rib for 5 cm. Fold and knit up rib edge as for back over next row. Work 8 rows of striped border from diagram and then continue in checkerboard stitch, increasing 1 st every 7 sts across first row (= 130 sts). Work evenly for 15 cm. Knit tog every 7th and 8th st across row. Continue to work decs every other row with one less st between them until 7 sts remain. Pull yarn through these 7 sts to fasten. Join seam at back.



- * = black
- = blue
- o = pink
- = white
- = white backstitch